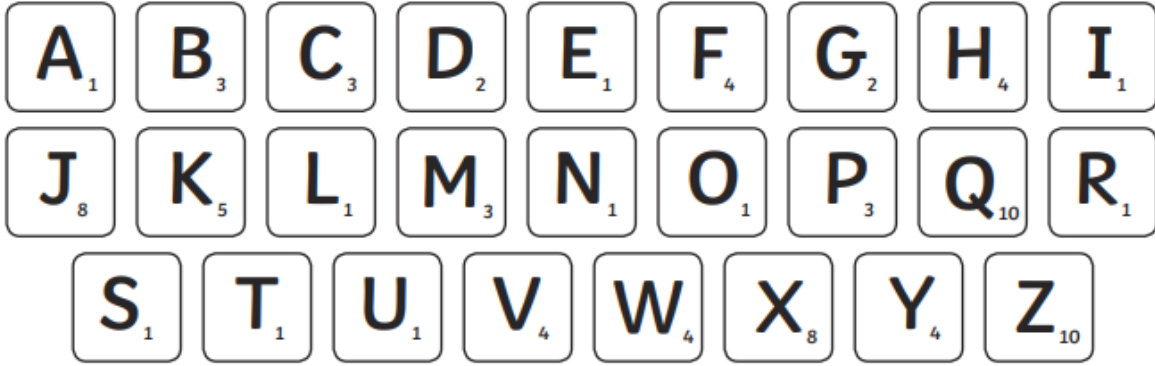


Use the letter scores to find out which of your spelling words would score the most points. The first one has been done for you.



| Spelling word | Values | Total |
|---------------|-----------------|-------|
| November | 1+1+4+1+3+3+1+1 | 15 |
| December | | |
| after | | |
| past | | |
| hour | | |
| half | | |
| minute | | |
| quarter | | |
| month | | |
| second | | |

Challenge: Which one of these words scores the most? Write this word in a sentence with the conjunction (joining word) **and** in it.

LI: Can I use a capital letters correctly in my writing?

Year 3 Spelling Spring 1 Week 5